

ZytoLight® SPEC NTRK2 Dual Color Break Apart Probe



Background

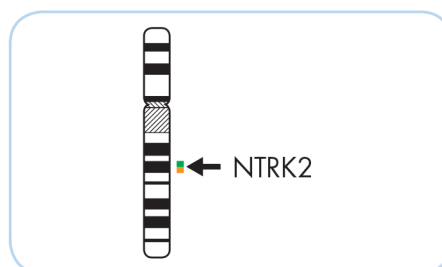
The *ZytoLight*® SPEC NTRK2 Dual Color Break Apart Probe is designed to detect translocations involving the chromosomal region 9q21.33 harboring the NTRK2 (neurotrophic receptor tyrosine kinase 2, a.k.a. TRKB) gene.

NTRK2 is a receptor tyrosine kinase (TK) that upon brain-derived growth factor (BDGF) and neurotrophin 4/5 (NT-4/5) binding phosphorylates itself and members of the MAPK pathway. It plays a key role in central and peripheral nervous system development as well as in cell survival. Translocations affecting the NTRK2 gene have been reported in several cancer types, including glioblastomas, pilocytic astrocytomas, head and neck squamous cell carcinoma, and lung adenocarcinoma. NTRK2 rearrangements result in the fusion of the 3' end of the NTRK2 gene with the 5' end of an activating partner gene. More than 20 different fusion partners of NTRK2 have been described. All these fusion genes encode hybrid proteins comprising the TK domain of NTRK2 and the N-terminus of the partner proteins encoding dimerization domains which results in ligand-independent TK activity.

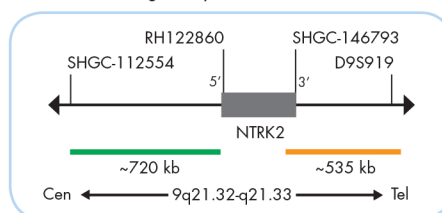
The treatment of patients with NTRK1, 2, or 3 fusion-positive cancers with an NTRK inhibitor, such as the FDA-approved drugs larotrectinib or entrectinib, is associated with high response rates, regardless of NTRK gene, fusion partner, and tumor type. Hence, detection of NTRK2 translocations by Fluorescence *in situ* Hybridization (FISH) may be of diagnostic and therapeutic relevance.

Probe Description

The SPEC NTRK2 Dual Color Break Apart Probe is a mixture of two direct labeled probes hybridizing to the 9q21.32-q21.33 band. The green fluorochrome direct labeled probe hybridizes proximal to the NTRK2 breakpoint region at 9q21.32-q21.33, the orange fluorochrome direct labeled probe hybridizes distal to the NTRK2 breakpoint region at 9q21.33.



Ideogram of chromosome 9 indicating the hybridization locations.



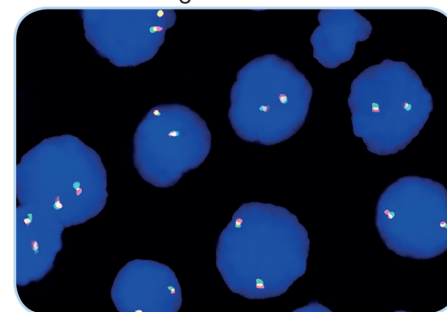
SPEC NTRK2 Probe map (not to scale).

References

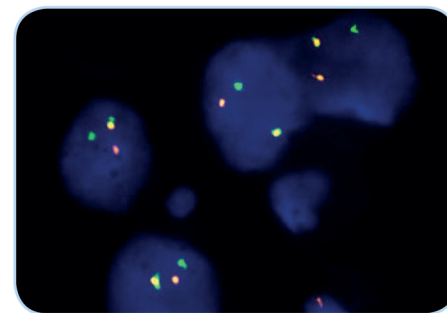
Amatu A, et al. (2016) ESMO Open 1: e000023.
 Cocco E, et al. (2018) Nat Rev Clin Oncol 15: 731-47.
 Hsiao SJ, et al. (2019) J Mol Diagn 21: 553-71.
 Jones DTW, et al. (2013) Nat Genet 45: 927-32.
 Prabhakaran N, et al. (2018) NeuroPathology [Epub ahead of print]
 Raez LE & Rolfo C (2016) Lung Cancer Manag 5: 1-4.
 Solomon JP & Hechtman JF (2019) Cancer Res 79: 3163-8.
 Stransky N, et al. (2014) Nat Commun 5: 4846.
 Wu G, et al. (2014) Nat Genet 46: 444-50.

Results

In an interphase nucleus of a normal cell lacking a translocation involving the 9q21.32-q21.33 band, two orange/green fusion signals are expected representing two normal (non-rearranged) 9q21.32-q21.33 loci. A signal pattern consisting of one orange/green fusion signal, one orange signal, and a separate green signal indicates one normal 9q21.32-q21.33 locus and one 9q21.32-q21.33 locus affected by a translocation. Isolated orange signals are the result of deletions proximal to the NTRK2 breakpoint region or are due to unbalanced translocations affecting this chromosomal region.



SPEC NTRK2 Dual Color Break Apart Probe hybridized to normal interphase cells as indicated by two orange/green fusion signals per nucleus.



Peritoneal carcinoma tissue section with rearrangement of the NTRK2 gene as indicated by one non-rearranged orange/green fusion signal, one orange, and one separate green signal.

Kindly provided by the Institute of Pathology, University Medical Center Göttingen, Germany.

Prod. No.	Product	Label	Tests* (Volume)
Z-2205-50	ZytoLight SPEC NTRK2 Dual Color Break Apart Probe CE IVD	●/●	5 (50 µl)
Z-2205-200	ZytoLight SPEC NTRK2 Dual Color Break Apart Probe CE IVD	●/●	20 (200 µl)
Related Products			
Z-2028-5	ZytoLight FISH-Tissue Implementation Kit CE IVD Incl. Heat Pretreatment Solution Citric, 150 ml; Pepsin Solution, 1 ml; Wash Buffer SSC, 210 ml; 25x Wash Buffer A, 50 ml; DAPI/DuraTect-Solution, 0.2 ml		5
Z-2028-20	ZytoLight FISH-Tissue Implementation Kit CE IVD Incl. Heat Pretreatment Solution Citric, 500 ml; Pepsin Solution, 4 ml; Wash Buffer SSC, 560 ml; 25x Wash Buffer A, 100 ml; DAPI/DuraTect-Solution, 0.8 ml		20

* Using 10 µl probe solution per test. CE IVD only available in certain countries. All other countries research use only! Please contact your local dealer for more information.